

# Portable Spectrophotometer CWD 4580 PLUS



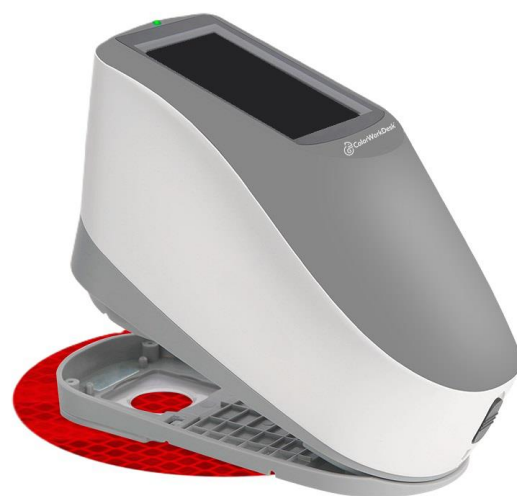
**URAI®**

# Portable Spectrophotometer CWD 4580 PLUS

The portable spectrophotometer model CWD 4580 PLUS belongs to the new generation of color measurement instruments with LED technology.

Instrument with 45°/0° geometry with compact and ergonomic design equipped with a 3.5 inch TFT color touch screen display. Special design with 20 mm aperture for road signs, it is used to measure the brightness factor and color coordinates of road signs, marking lines, signage and reflective films.

For irregular samples with stripes or granular samples, the instrument has high precision and high stability. It is used for accurate analysis and transmission of laboratory color, also for color measurement of fluorescence sample.



## MAIN FEATURES

**45°/0° geometry compliant with CIE No.15, GB/T 3978, GB 2893, GB/T 18833, ISO7724/1, ASTM E1164, DIN5033 Teil7**

**The instrument is equipped with a sophisticated 3.5-inch TFT color LCD display with capacitive touch screen**

**The measurement area is single 20 mm**

**Data communication with the PC is via USB port and Bluetooth**

**The internal memory can store over 30,000 measurements**

**Built-in standard polygon tolerance setting and specific range of the road sign, especially suitable for the brightness factor of the road sign and the judgment of chromaticity performance**

## Portable Spectrophotometer CWD 4580 PLUS

### TECHNICAL CHARACTERISTICS OF THE INSTRUMENT

<b>Optical Geometry</b>	45°/0° (45 ring-shaped illumination, vertical viewing)
<b>Light Source</b>	Combined LED Light, UV Light
<b>Color space</b>	CIE Lab, XYZ, Yxy,LCh, CIE LUV, HunterLab
<b>Color Difference Formula</b>	$\Delta E^*_{ab}$ , $\Delta E^*_{uv}$ , $\Delta E^*_{94}$ , $\Delta E^*_{cmc}(2:1)$ , $\Delta E^*_{cmc}(1:1)$ , $\Delta E^*_{00}$ , $DIN\Delta E_{99}$ , $\Delta E$ (Hunter)
<b>Observer Angle</b>	2°/10°
<b>Colorimetric Index</b>	WI(ASTM E313, CIE/ISO,AATCC,Hunter), YI(ASTM D1925, ASTM 313), MI (Metamerism Index), Staining Fastness, Color Fastness, Color Strength, Opacity,Supporting Colorimetric Polygon Tolerance
<b>Illuminant</b>	D65,A,C,D50,D55,D75,F1,F2,F3,F4,F5,F6,F7,F8,F9,F10,F11,F12
<b>Displayed Data</b>	Spectrogram/Values, Chromaticity Values, Color Difference Values/Graph, Pass/Fail Result, Color Offset
<b>Spectrophotometric Mode</b>	Concave Grating
<b>Wavelength Range</b>	400nm~700nm
<b>Wavelength Interval</b>	10 nm
<b>Semiband Width</b>	10 nm
<b>Measured Reflectance Range</b>	0~200%
<b>Sensor</b>	256 Image Element Double Array CMOS Image Sensor
<b>Measuring Time</b>	About 1.5s
<b>Measuring Aperture</b>	Φ 20mm
<b>Repeatability</b>	$\Delta E^* \leq 0.1$ (400 nm - 700 nm)
	Chromaticity value:within $\Delta E^*_{ab}$ 0.04 ( When a white calibration plate is measured 30 times at 5 second intervals after white calibration)
<b>Inter-instrument Error</b>	Within $\Delta E^*_{ab}$ 0.2 (Average for 12 BCRA Series II color tiles)
<b>Data Port</b>	USB, Bluetooth
<b>Data Storage</b>	Standard 1000 Pcs, Sample 30000 Pcs
<b>Language</b>	Chinese,English
<b>Power</b>	LI-Li-ion battery. 5000 measurements within 8 hours
<b>Illuminant Life Span</b>	5 years, more than 3 million times measurements
<b>Display</b>	3.5-inch TFT color LCD, Capacitive Touch Screen
<b>Operating Environment</b>	Temperature: 0~40°C; Humidity: 0~85% (No Condensation)
<b>Storage Environment</b>	Temperature: -20~50°C; Humidity: 0~85% (No Condensation)
<b>Dimension</b>	184 × 77 × 105 mm
<b>Weight</b>	600 gr.
<b>Standard Accessory</b>	Power Adapter, USB Cable, User Manual,White and Black Calibration Board
<b>Optional Accessory</b>	Micro printer